

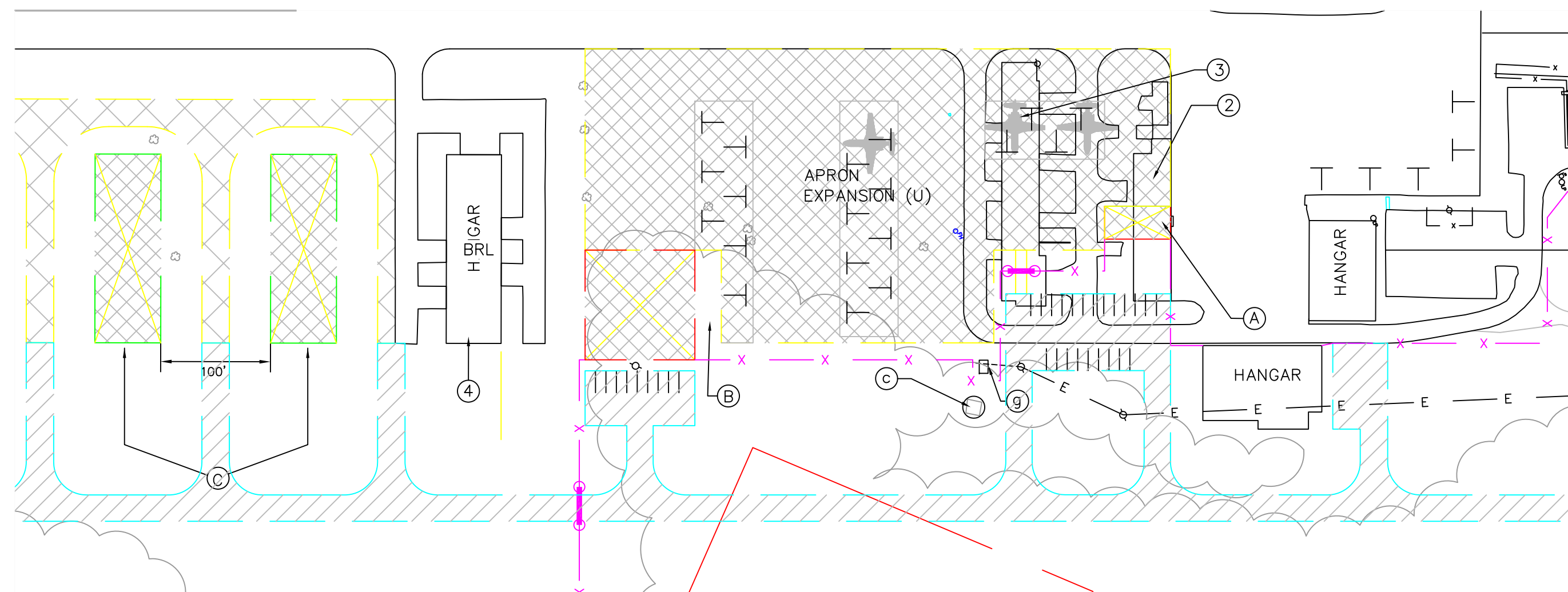
### GENERAL NOTES

- EXISTING AIRPORT REFERENCE POINT – BEGINNING AT THE SOUTHWEST END OF THE NORTHEAST-SOUTHWEST RUNWAY 3/21, THENCE ALONG THE CENTERLINE N22°25'27"E (TRUE) 2,500' TO THE ARP COORDINATES: LATITUDE NORTH 34°24'11.07" LONGITUDE WEST 80°07'09.22".
- ULTIMATE AIRPORT REFERENCE POINT – BEGINNING AT THE SOUTHWEST END OF THE NORTHEAST-SOUTHWEST RUNWAY 3/21, THENCE ALONG THE CENTERLINE N22°25'27"E (TRUE) 2,750' TO THE ARP COORDINATES: LATITUDE NORTH 34°24'08.77" LONGITUDE WEST 80°07'10.36".
- BUILDING RESTRICTION LINE (BRL) ESTABLISHED TO PROVIDE 35' OBSTACLE CLEARANCE WITH RESPECT TO FAR PART 77 SURFACES. BRL ALTERED WITHIN TERMINAL AREA TO ALLOW HANGAR AND TERMINAL BUILDING CONSTRUCTION MEETING FAR PART 77 REQUIREMENTS.

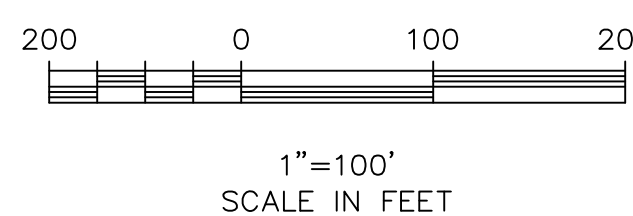
### REFERENCES

- OBSTRUCTION SURVEY DATA PROVIDED BY MCKIM & CREED, BOLIVA, NC, DATED: MAY 1, 2005.
- CONTOUR DATA PREPARED BY AERO-DYNAMICS, CORP., CHARLOTTE, NC. PHOTOGRAMMETRIC METHODS USING AERIAL PHOTOGRAPHY DATED OCTOBER 04, 2000. GROUND CONTROL SURVEY BY AERO-DYNAMICS, CORP. HORIZONTAL CONTROL SURVEYS BASED ON SOUTH CAROLINA STATE PLANE COORDINATES, NAD83, INTERNATIONAL FOOT. VERTICAL CONTROL SURVEYS BASED ON NAVD88.
- GEODETTIC COORDINATE AND ELEVATION DATA FOR RUNWAY PROVIDED BY: AERO-DYNAMICS, CORP., CHARLOTTE, NC.

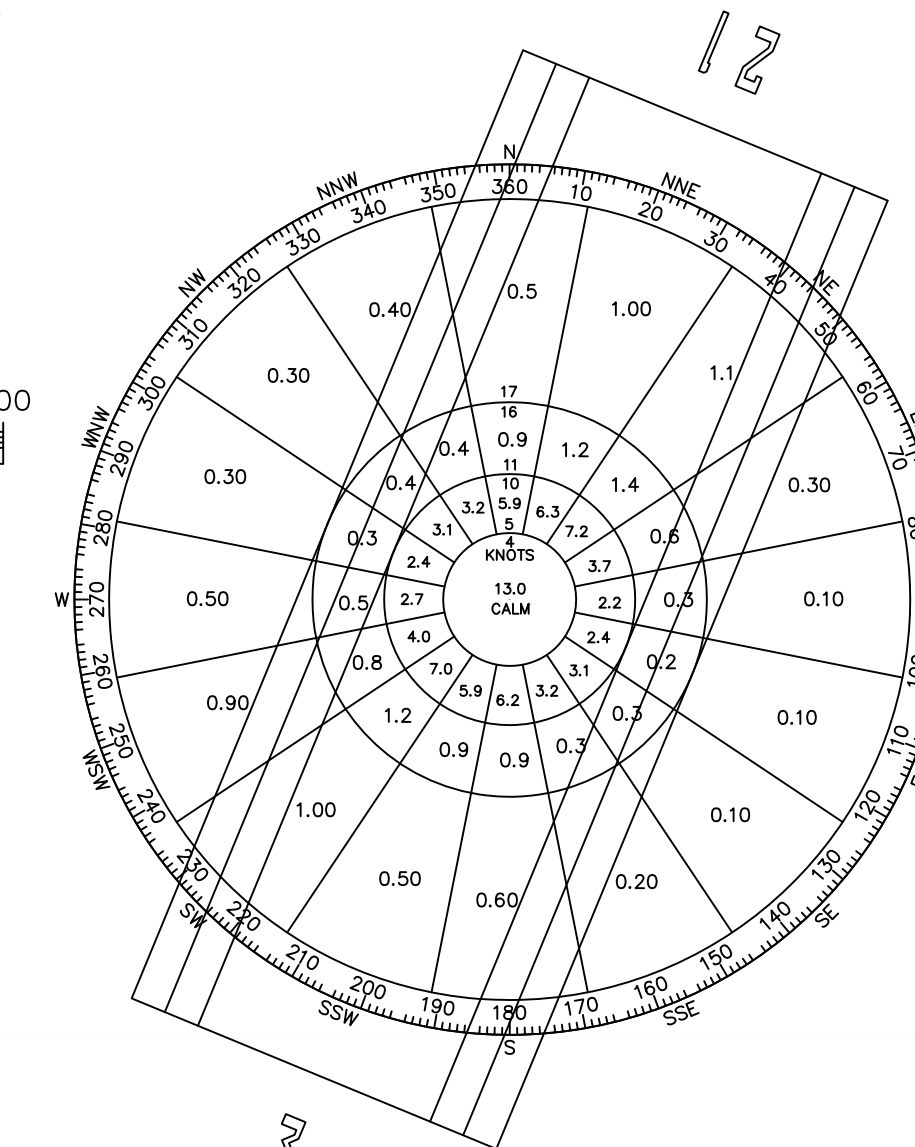
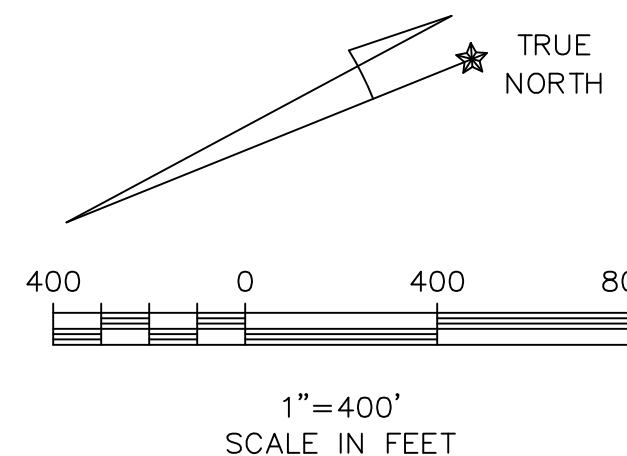
The preparation of this document was financed in part through a planning grant from the federal aviation administration as provided under section 505 of the airport and airway improvement act of 1982. The contents do not necessarily reflect the official views or policy of the FAA. Acceptance of this document by the FAA does not in any way constitute a commitment on the part of the United States to participate in any development depicted therein nor does it indicate that the proposed development is environmentally acceptable in accordance with appropriate laws.



## TERMINAL AREA INSET



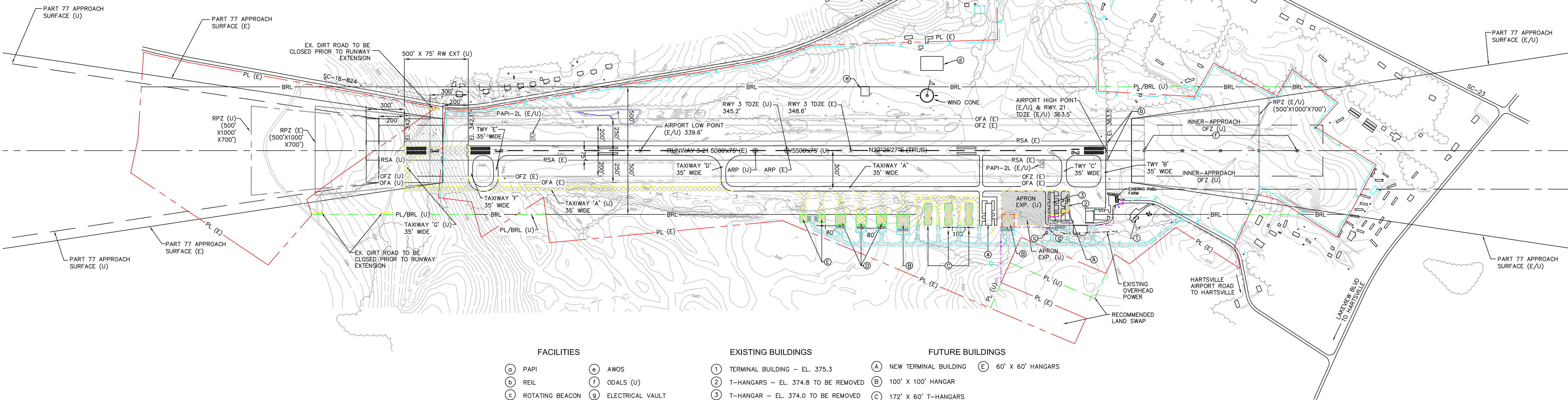
MAG. DEC. 7°22'W (JANUARY 2006)  
3' PER YEAR



MPH	KNOTS	WIND COVERAGE
12	10.5	94.6%
15	13	97.9%
18	16	99.1%

### ALL WEATHER WIND ROSE

WIND COVERAGE DATA FROM NOAA CLIMATOLOGICAL SUMMARY  
FLORENCE REGIONAL AIRPORT (FLO), SOUTH CAROLINA  
OBSERVATION PERIOD JAN. 1960 - DEC. 1964



### FACILITIES

- Ⓐ PAPI
- Ⓑ REIL
- Ⓒ ROTATING BEACON
- Ⓓ NON-DIRECTIONAL BEACON
- Ⓔ AWOS
- Ⓕ ODALS (U)
- Ⓖ ELECTRICAL VAULT

### EXISTING BUILDINGS

- ① TERMINAL BUILDING - EL. 375.3
- ② T-HANGARS - EL. 374.8 TO BE REMOVED
- ③ T-HANGAR - EL. 374.0 TO BE REMOVED
- ④ T-HANGAR - EL. 371.5

### FUTURE BUILDINGS

- Ⓐ NEW TERMINAL BUILDING
- Ⓑ 100' X 100' HANGAR
- Ⓒ 172' X 60' T-HANGARS
- Ⓓ 80' X 80' HANGARS
- Ⓔ 60' X 60' HANGARS

AIRPORT DESIGN STANDARDS DIMENSIONAL DATA		
AIRPORT REFERENCE CODE (ARC) ITEM	ARC	B-II
RUNWAY SAFETY AREA (RSA) WIDTH	150'	
RSA BEYOND R/W 3 END	300'	
RSA BEYOND R/W 21 END	300'	
RUNWAY OBSTACLE FREE ZONE (OFZ) WIDTH	400'	
OFZ BEYOND R/W END	200'	
RUNWAY OBJECT FREE AREA (ROFA)	500'	
ROFA BEYOND R/W END	300'	
RUNWAY / PARALLEL TAXIWAY SEPARATION	240'	
TAXIWAY OBJECT FREE AREA (TOFA) WIDTH	131'	
TAXILANE OBJECT FREE AREA	115'	
MINIMUM AIRCRAFT PARKING (DIST. FROM R/W CENTERLINE)	250'	
TAXIWAY / RUNWAY CENTERLINE HOLD POSITION	200'	

ITEM	EXISTING		ULTIMATE	
	3	21	3	21
COORDINATES (NAD83)	LATITUDE NORTH 34°23'48.21"	34°24'33.92"	LATITUDE NORTH 34°23'43.62"	34°24'33.92"
	LONGITUDE WEST 80°07'20.60"	80°06'57.84"	LONGITUDE WEST 80°07'22.88"	80°06'57.84"
LENGTH X WIDTH	5,000' X 75'		5,500' X 75'	
EFFECTIVE GRADIENT	0.43%		0.43%	
PAVEMENT SURFACE	ASPHALT			
PAVEMENT STRENGTH (THOUSANDS OF POUNDS)	30 SWG		30 SWG	
MARKING	NPI	NPI	NPI	NPI
RUNWAY EDGE LIGHTING	MIRL	MIRL	MIRL	MIRL
VISUAL APPROACH AIDS	PAPI-2L	PAPI-2L	PAPI-2L	PAPI-2L
	REIL	NONE	ODALS	ODALS
NAVAIDS	NDB/GPS	NDB/GPS	NDB/GPS	NDB/GPS
RUNWAY VISIBILITY MINIMUMS	1-MILE	1-MILE	1-MILE	1-MILE
TOUCHDOWN ZONE ELEVATION (TDZE)	348.6'	363.5'	345.2'	363.5'

AIRPORT DATA			
ITEM	EXISTING	ULTIMATE	
AIRPORT REFERENCE POINT (ARP)	LATITUDE NORTH 34°24'11.07"	34°24'08.77"	
	LONGITUDE WEST 80°07'09.22"	80°07'10.36"	
ESTABLISHED AIRPORT ELEVATION (MEAN SEA LEVEL)	363.5'	363.5'	
MEAN MAXIMUM TEMPERATURE - HOTTEST MONTH	91°F	91°F	
AIRPORT REFERENCE CODE (ARC)	B-II	B-II	
FAA NPAS SERVICE LEVEL	G.A.	G.A.	
CRITICAL AIRCRAFT / DESIGN AIRCRAFT	B-II (FAMILY)	B-II (FAMILY)	
AIRPORT LIGHTING AND TERMINAL NAVAIDS	ROT. BEACON	ROT. BEACON	
	AWOS	AWOS	
SEGMENTED CIRCLE (SC) & LIGHTED WIND CONE (LWC)	SC/LWC	SC/LWC	
TAXIWAY LIGHTING AND SIGNAGE	MIL	MIL	

FAR PART 77 RUNWAY APPROACH AND RPZ DATA		
RUNWAY END	EXISTING	ULTIMATE
3	NONPRECISION APPROACH (GPS) SURFACE VISIBILITY MINIMUMS NOT LESS THAN 1 MILE 500' X 1000' X 3500' 10000' @ 34:1 SLOPE RUNWAY PROTECTION ZONE (RPZ) 500' X 1000' X 700'	NONPRECISION APPROACH (GPS) SURFACE VISIBILITY MINIMUMS NOT LESS THAN 1 MILE 500' X 1000' X 3500' 10000' @ 34:1 SLOPE RUNWAY PROTECTION ZONE (RPZ) 500' X 1000' X 700'
21	NONPRECISION APPROACH (GPS) SURFACE VISIBILITY MINIMUMS NOT LESS THAN 1 MILE 500' X 1000' X 3500' 10000' @ 34:1 SLOPE RUNWAY PROTECTION ZONE (RPZ) 500' X 1000' X 700'	NONPRECISION APPROACH (GPS) SURFACE VISIBILITY MINIMUMS NOT LESS THAN 1 MILE 500' X 1000' X 3500' 10000' @ 34:1 SLOPE RUNWAY PROTECTION ZONE (RPZ) 500' X 1000' X 700'

LEGEND		
ITEM	EXISTING	ULTIMATE
WOODED AREAS		
GROUND CONTOURS		
ROADS (UNPAVED)		
DRAINAGE FEATURES		
ROADS (PAVED)		
FENCE		
BUILDINGS/STRUCTURES AS NOTED		
AIRPORT PAVED AREAS		
AIRPORT PROPERTY LINE (PL)		
AIRPORT BUILDING RESTRICTION LINE (BRL)		
RUNWAY PROTECTION ZONE (RPZ)		
AUTOMATED WEATHER SYSTEM		
AIRPORT REFERENCE POINT (ARP)		
HOLDSHORT LINES		

**TALBERT & BRIGHT**  
ENGINEERING & PLANNING CONSULTANTS  
4810 SHELLEY DRIVE  
WILMINGTON, NC 28405  
PHONE: 910-763-5350  
FAX: 910-762-6281  
EMAIL: TBILM@TALBERT.COM

DATE

DESCRIPTION REVISIONS

REV. NO.

**HARTSVILLE MUNICIPAL AIRPORT**  
**HARTSVILLE, SOUTH CAROLINA**  
**AIRPORT LAYOUT DRAWING**

Approved By

Title

Date

CITY OF  
HARTSVILLE  
APPROVAL BLOCK

Date JULY 2007

Scale 1" = 400'

Drawn KAC

Checked JMM/LSM

Project No. 2706-0503

Sheet No.

1

OF 5